



St James's Square | | Bath | BA1 2TS

£1,250 Per month

PLE | Property
Link Estates

St James's Square |
Bath | BA1 2TS
£1,250 Per month
EPC Band: D | Council Tax Band: A

Recently renovated, unfurnished 1 bedroom apartment with private courtyard garden. Available to let immediately.

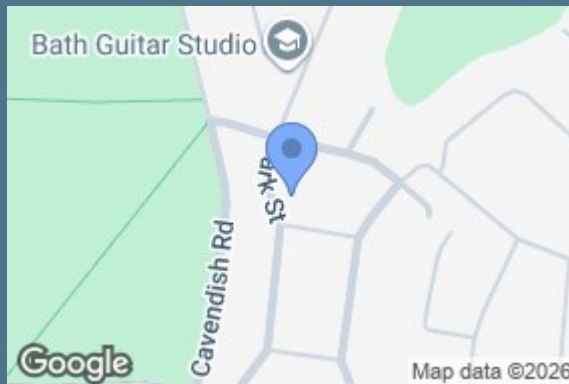
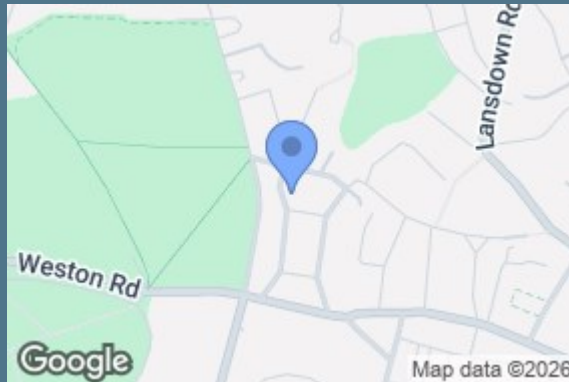
Located prestigious St James's Square, this Grade I listed apartment offers a blend of historic charm and modern luxury. Having recently undergone a complete and comprehensive renovation - boasting a unique layout with a fresh aesthetic.

The apartment benefits from a generous private courtyard garden, providing a serene outdoor space perfect

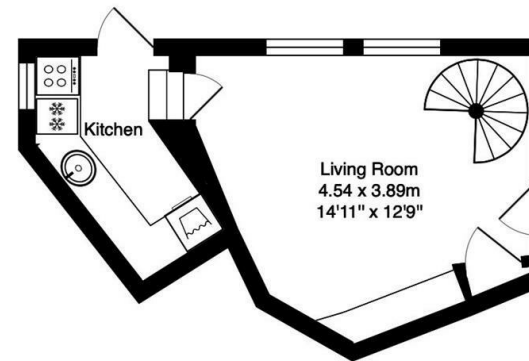
- Recently Renovated Apartment
- Fully Fitted Kitchen
- Private Courtyard Garden
- Council Tax Band A
- Private Resident Access To The Square Garden
- Close To Local Amenities
- Sought-after Location



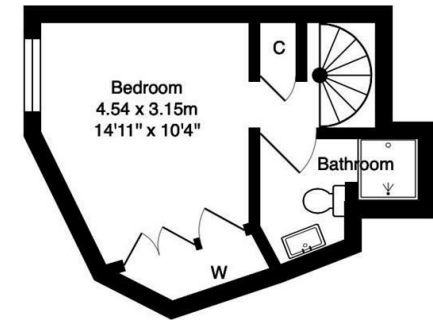




Flat 3, 16 St. James's Square, Bath



Ground Floor
Area: 20.0 m² ... 215 ft²



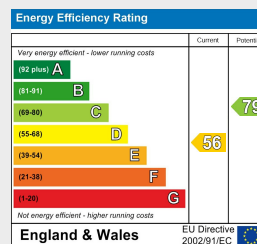
First Floor
Area: 14.7 m² ... 158 ft²

Total Area: 34.7 m² ... 374 ft²

Whilst every attempt has been made to ensure the accuracy of the floorplan contained here, measurements of doors, windows, rooms and any other items are approximate and no responsibility is taken for any error, omission or mis-statement.

This plan is purely for illustrative purposes only and should be used as such by any prospective purchaser.

Area includes internal and external wall thickness
www.energyassessmentservices.co.uk



30 Charles Street

Bath

BA1 1HU

01225 447 440

bath@propertylinkstates.com

propertylinkstates.com